



**EDUCATION | CONSULTING | ADVISORY SERVICES**

**Visit our website to know more:**

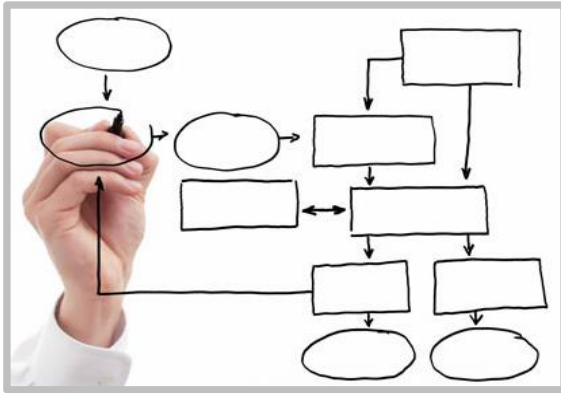
**[WWW.AJITASAPCONSULTING.COM](http://WWW.AJITASAPCONSULTING.COM)**

**Contact us:**

**[info@ajitasapconsulting.com](mailto:info@ajitasapconsulting.com)**



Who are we?



**Process Experts**



**Passionate for Technology**

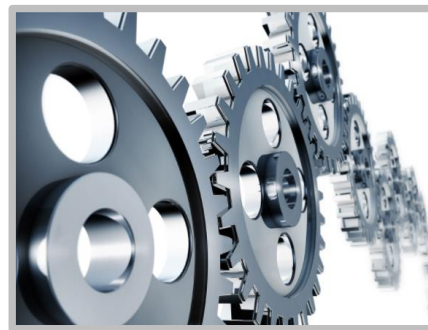


**Love to share knowledge**

What we do?



**Niche Consulting & Value Added Services**



**Targeted Consulting**



**SAP Education Services**



**Staffing Services**



# Our Customer Reach..



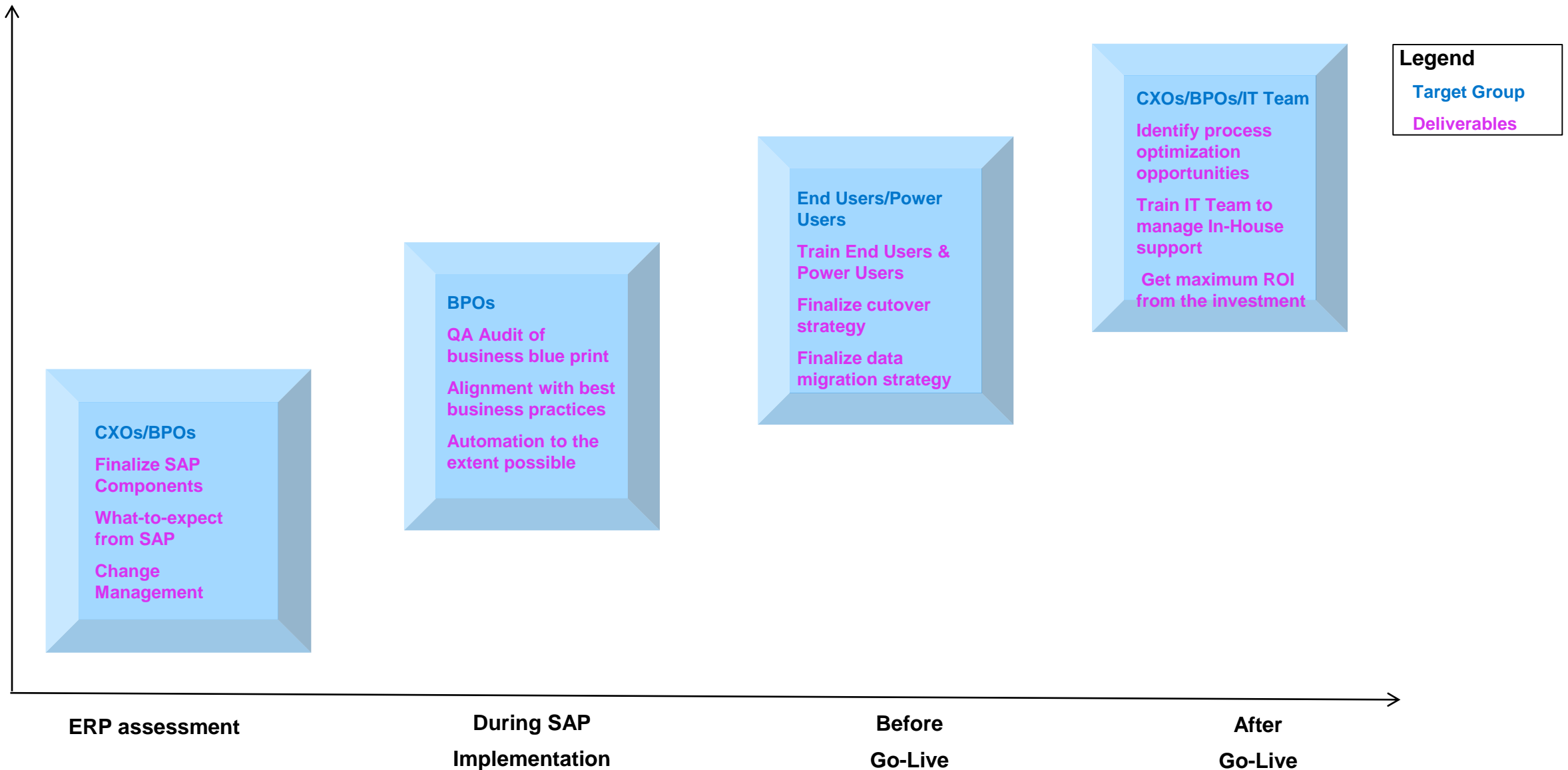


# Various professional blogs and white papers by us

Sr. No	Blog / White Paper	Category
01	<u><a href="#">Profit Center derivation in various scenarios</a></u>	SAP – Functional
02	<u><a href="#">Decoding the cost-object mapping framework in SAP Central Finance</a></u>	SAP - Functional
03	<u><a href="#">Demystifying the Ledger Currency Setup and Currency Conversion in SAP S/4 HANA Finance</a></u>	SAP – Functional
04	<u><a href="#">How to Set Up Parallel Asset Accounting in SAP S/4HANA Finance with Differing Fiscal Year Variants</a></u>	SAP – Functional
05	<u><a href="#">A holistic approach to implementing Central Finance</a></u>	SAP - Functional

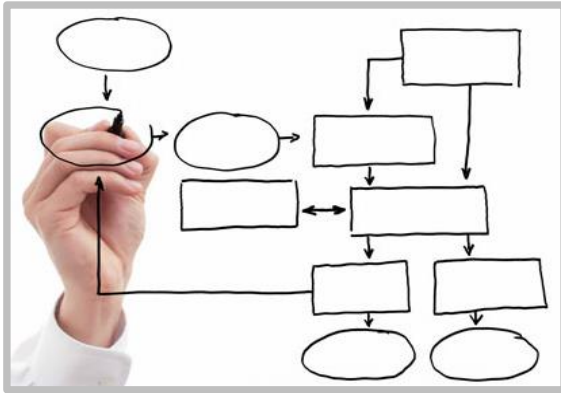


# We collaborate with customers throughout their SAP Journey





Who are we?



**Process Experts**



**Passionate for Technology**

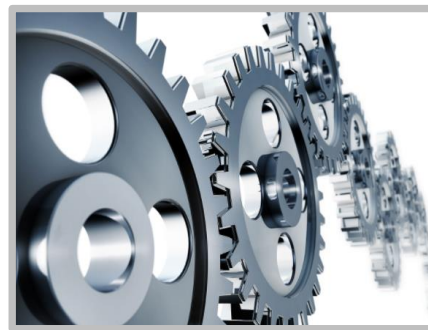


**Love to share knowledge**

What we do?



**Niche Consulting & Value Added Services**



**Targeted Consulting**



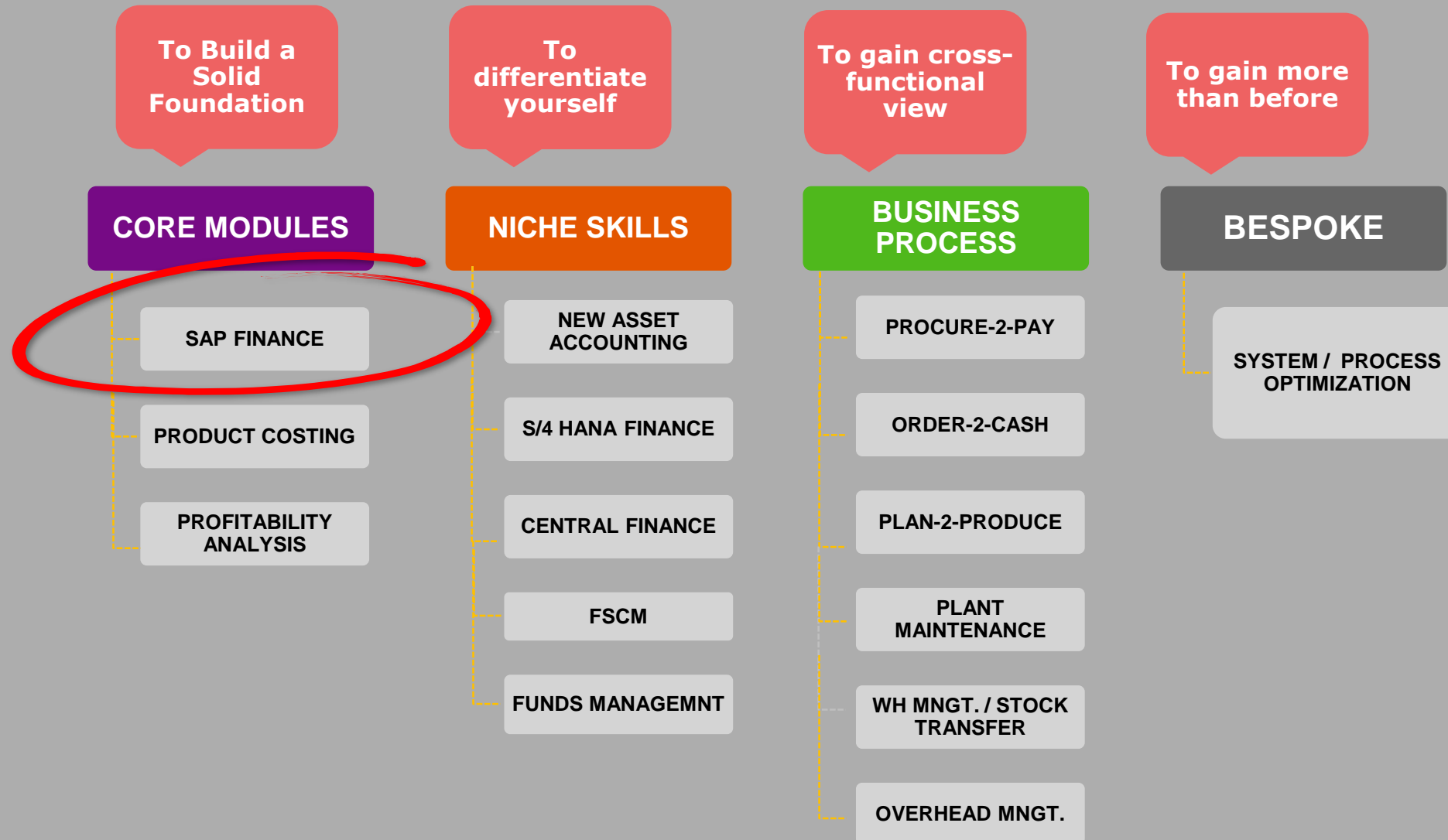
**SAP Education Services**



**Staffing Services**



# Our SAP Education Offerings





# Training methodology

- A perfect blend of SAP courses (E.g. TS4F01-02) and trainer's rich expertise
- Each topic is covered the following way:
  - ❖ WHY it is relevant to the business?
  - ❖ HOW it is to be enabled? [the configuration]
  - ❖ WHAT master data does it need to execute the process?
  - ❖ HOW to execute the process?
  - ❖ WHEN to execute the process? [daily, period end, yearly, etc.]
  - ❖ WHAT questions to be asked during requirement gathering?
  - ❖ WHERE the data is stored and how to retrieve? [The SAP Tables]
  - ❖ WHAT are the possible enhancement options? [User exit, BADI,BAPI, Function Modules, etc. ]
  - ❖ WHAT reports are available for the process?





## SAP Overview

Topic	Content
SAP overview	<ul style="list-style-type: none"><li>▪ Why/What is SAP ERP</li><li>▪ Evolution of SAP (R/1 to S/4 HANA)</li><li>▪ Client/Server Architecture</li><li>▪ Navigation in SAP</li><li>▪ Overview of different Modules in SAP</li><li>▪ High level overview of Finance module and its place among all other modules</li><li>▪ Available online resources</li></ul>



## SAP Enterprise structure

Topic	Content
Enterprise Structure – definition & set up	<ul style="list-style-type: none"><li>▪ Overview of Enterprise structure elements in different modules in SAP</li><li>▪ Explanation of SAP Enterprise structure elements in SAP FICO</li><li>▪ Defining and assigning of SAP FICO Enterprise structure elements (Co. Code, Co. Area, Chart of Accounts, Profit Centers, Segment, etc.)</li><li>▪ Company code Global Settings<ul style="list-style-type: none"><li>❖ Fiscal Year Variant</li><li>❖ Posting Period Variant</li><li>❖ Field Status Variant</li><li>❖ Ledger &amp; Currency settings</li></ul></li></ul>



## General Ledger Accounting

Topic	Content
General Ledger	<ul style="list-style-type: none"><li>▪ GL Master Data<ul style="list-style-type: none"><li>❖ Account Groups, GL Master data</li></ul></li><li>▪ GL Postings<ul style="list-style-type: none"><li>❖ Document types &amp; Number ranges</li><li>❖ Posting Keys</li><li>❖ Tolerance groups</li><li>❖ Open &amp; Close Posting Periods</li><li>❖ Financial Postings</li><li>❖ Clearing</li></ul></li><li>▪ Validations &amp; Substitutions</li><li>▪ Information System<ul style="list-style-type: none"><li>❖ Financial Statement Version</li><li>❖ Key reports in SAP FI</li></ul></li><li>▪ Key SAP Tables</li></ul>



## Accounts Receivables

Topic	Content
Accounts Receivables	<ul style="list-style-type: none"><li>▪ Customer / Business Partner Master Data<ul style="list-style-type: none"><li>❖ Account Groups, Screen Layout, Master Data, etc</li></ul></li><li>▪ AR Postings<ul style="list-style-type: none"><li>❖ Payment Terms</li><li>❖ Special GL postings</li><li>❖ Customer Invoice &amp; Credit memo</li><li>❖ Customer Incoming Payment</li><li>❖ Clearing</li><li>❖ SD O2C (Order to Cash Life cycle)</li></ul></li><li>▪ Dunning<ul style="list-style-type: none"><li>❖ Dunning Set up</li><li>❖ Dunning Run processing</li></ul></li><li>▪ Information System<ul style="list-style-type: none"><li>❖ Key Reports in SAP</li></ul></li><li>▪ Key Tables in AR</li></ul>



## Accounts Payables

Topic	Content
Accounts Payables	<ul style="list-style-type: none"><li>▪ Vendor Master Data<ul style="list-style-type: none"><li>❖ Account Groups, Screen Layout, Master Data, Sensitive fields</li></ul></li><li>▪ Vendor/AP Postings<ul style="list-style-type: none"><li>❖ Payment Terms</li><li>❖ Special GL postings</li><li>❖ Tolerance Groups</li><li>❖ Vendor Invoice &amp; Credit memo</li><li>❖ Vendor Outgoing Payment</li><li>❖ Clearing</li><li>❖ MM P2P (Procure 2 Pay Life cycle)</li></ul></li><li>▪ Information System<ul style="list-style-type: none"><li>❖ Key Reports in SAP</li></ul></li><li>▪ Key Tables in AP</li></ul>



## Bank Accounting

Topic	Content
Bank Accounting	<ul style="list-style-type: none"><li>▪ House Bank set Up<ul style="list-style-type: none"><li>❖ House Bank</li><li>❖ Account ID</li><li>❖ Bank Key</li></ul></li><li>▪ Automatic Payment Process<ul style="list-style-type: none"><li>❖ APP set up</li><li>❖ APP Execution (Proposal Run / Payment Run)</li><li>❖ Error Handling in Automatic Payments</li></ul></li><li>▪ Key Tables in Bank Accounting and Automatic Payments</li></ul>



## Cash Accounting

Topic	Content
Cash Accounting	<ul style="list-style-type: none"><li data-bbox="970 334 1454 376">▪ Set up Cash Journal</li><li data-bbox="970 411 1505 454">▪ Perform Cash Postings<ul style="list-style-type: none"><li data-bbox="1085 488 1549 531">❖ Cash Receipts posting</li><li data-bbox="1085 554 1556 596">❖ Cash Payment Posting</li><li data-bbox="1085 619 1472 662">❖ Split postings etc.</li><li data-bbox="1085 685 1607 728">❖ Printing the Cash Journal</li></ul></li><li data-bbox="970 751 1595 793">▪ Key Tables in Cash Journal</li></ul>



## Asset Accounting

Topic	Content
Asset Accounting	<ul style="list-style-type: none"><li>▪ Asset accounting overview and Organizational elements in AA</li><li>▪ Chart of Depreciation, Depreciation areas</li><li>▪ Asset Master data</li><li>▪ Asset Acquisitions<ul style="list-style-type: none"><li>❖ External acquisition and Internal acquisition of Asset (AUC)</li></ul></li><li>▪ Depreciation<ul style="list-style-type: none"><li>❖ Different methods of depreciation (SLM/Useful life, WDV, etc)</li><li>❖ Components of a depreciation key</li><li>❖ Depreciation Posting</li></ul></li><li>▪ Information System<ul style="list-style-type: none"><li>❖ Key reports in Asset Accounting</li></ul></li><li>▪ Key Tables in AA</li></ul>





## Financial Close

Topic	Content
Financial Close	<ul style="list-style-type: none"><li data-bbox="970 348 1493 386">▪ Month End activities<ul style="list-style-type: none"><li data-bbox="1085 422 1447 461">❖ Accrual/Deferral</li><li data-bbox="1085 489 1429 528">❖ Recurring entry</li><li data-bbox="1085 556 1702 595">❖ Foreign Exchange Revaluation</li><li data-bbox="1085 624 1498 662">❖ Automatic Clearing</li><li data-bbox="1085 691 1378 729">❖ Depreciation</li><li data-bbox="1085 758 1513 796">❖ Open / Close Period</li></ul></li><li data-bbox="970 825 1434 863">▪ Year End activities<ul style="list-style-type: none"><li data-bbox="1085 899 1480 938">❖ Asset Year closing</li><li data-bbox="1085 966 1666 1005">❖ Number range maintenance</li></ul></li></ul>



## Expert Topics

Topic	Content
Ledger Concept & Document Splitting	<ul style="list-style-type: none"><li>▪ Standard Ledger</li><li>▪ Extension Ledger</li><li>▪ Ledger group and representative ledger</li><li>▪ Document Splitting</li></ul>



## Other details

- All sessions are online
- Course Duration: 60-70 hours
- Corporate Training available on request



Thank you Thank you  
Grazie Grazie  
Tack Tack  
Merci Merci  
谢谢 谢谢  
Dhanya-waadh Dhanya-waadh  
Obrigado Obrigado

