



EDUCATION | CONSULTING | ADVISORY SERVICES

Visit our website to know more:

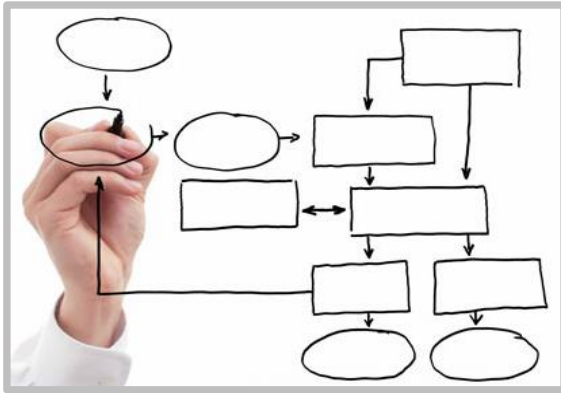
WWW.AJITASAPCONSULTING.COM

Contact us:

info@ajitasapconsulting.com



Who are we?



Process Experts



Passionate for Technology



Love to share knowledge

What we do?



Niche Consulting & Value Added Services



Targeted Consulting



SAP Education Services



Staffing Services



Our Customer Reach..



Toyota Kirloskar

**Tech
Mahindra**



Binani
BRAJ BINANI GROUP



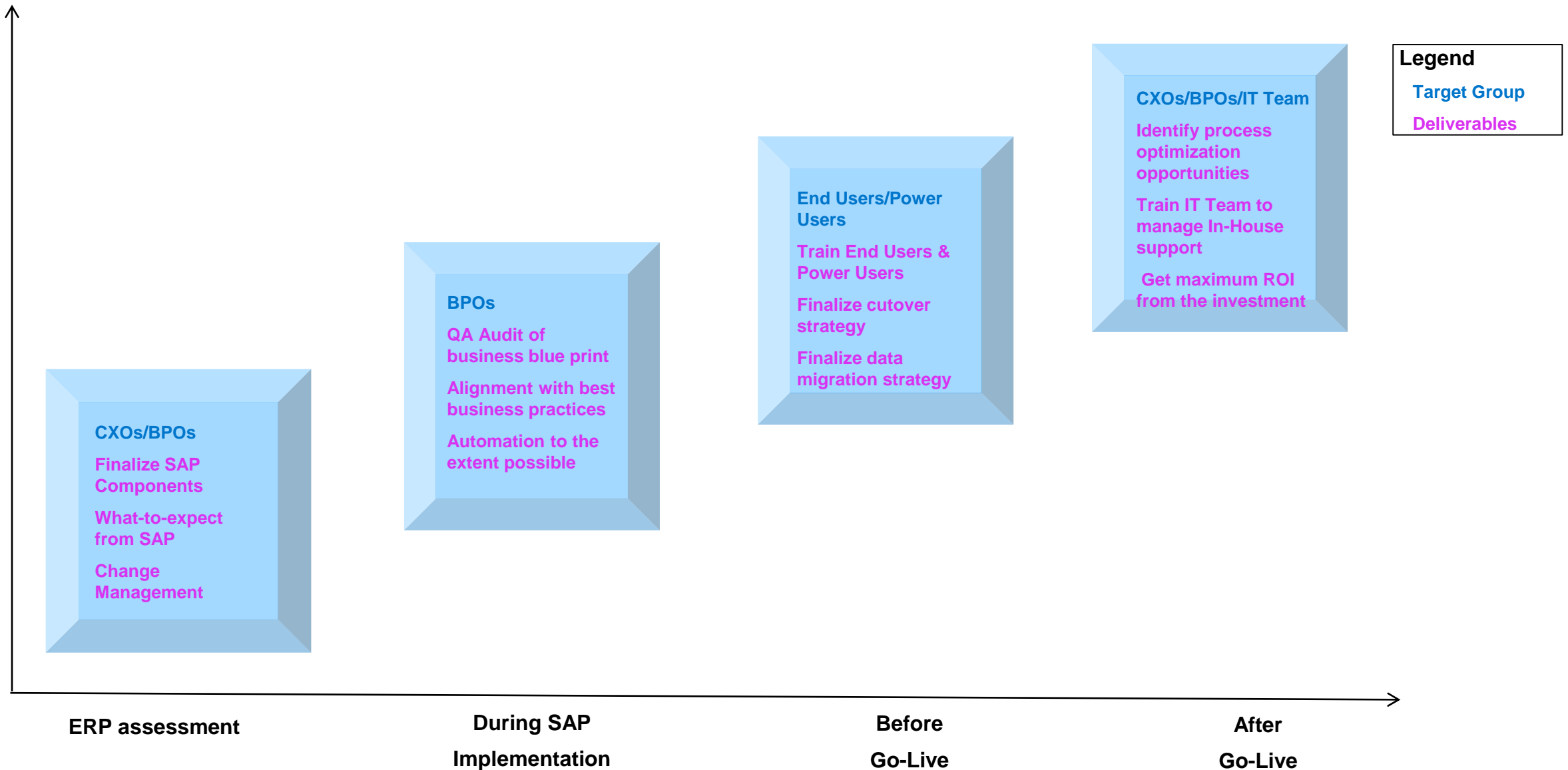


Various professional blogs and white papers by us

Sr. No	Blog / White Paper	Category
01	<u>Profit Center derivation in various scenarios</u>	SAP – Functional
02	<u>Decoding the cost-object mapping framework in SAP Central Finance</u>	SAP - Functional
03	<u>Demystifying the Ledger Currency Setup and Currency Conversion in SAP S/4 HANA Finance</u>	SAP – Functional
04	<u>How to Set Up Parallel Asset Accounting in SAP S/4HANA Finance with Differing Fiscal Year Variants</u>	SAP – Functional
05	<u>A holistic approach to implementing Central Finance</u>	SAP - Functional

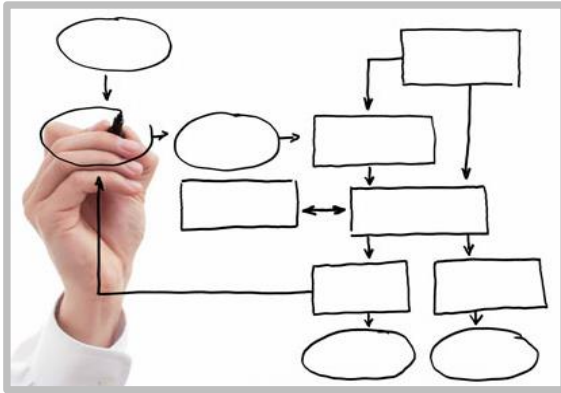


We collaborate with customers throughout their SAP Journey





Who are we?



Process Experts



Passionate for Technology



Love to share knowledge

What we do?



Niche Consulting & Value Added Services



Targeted Consulting



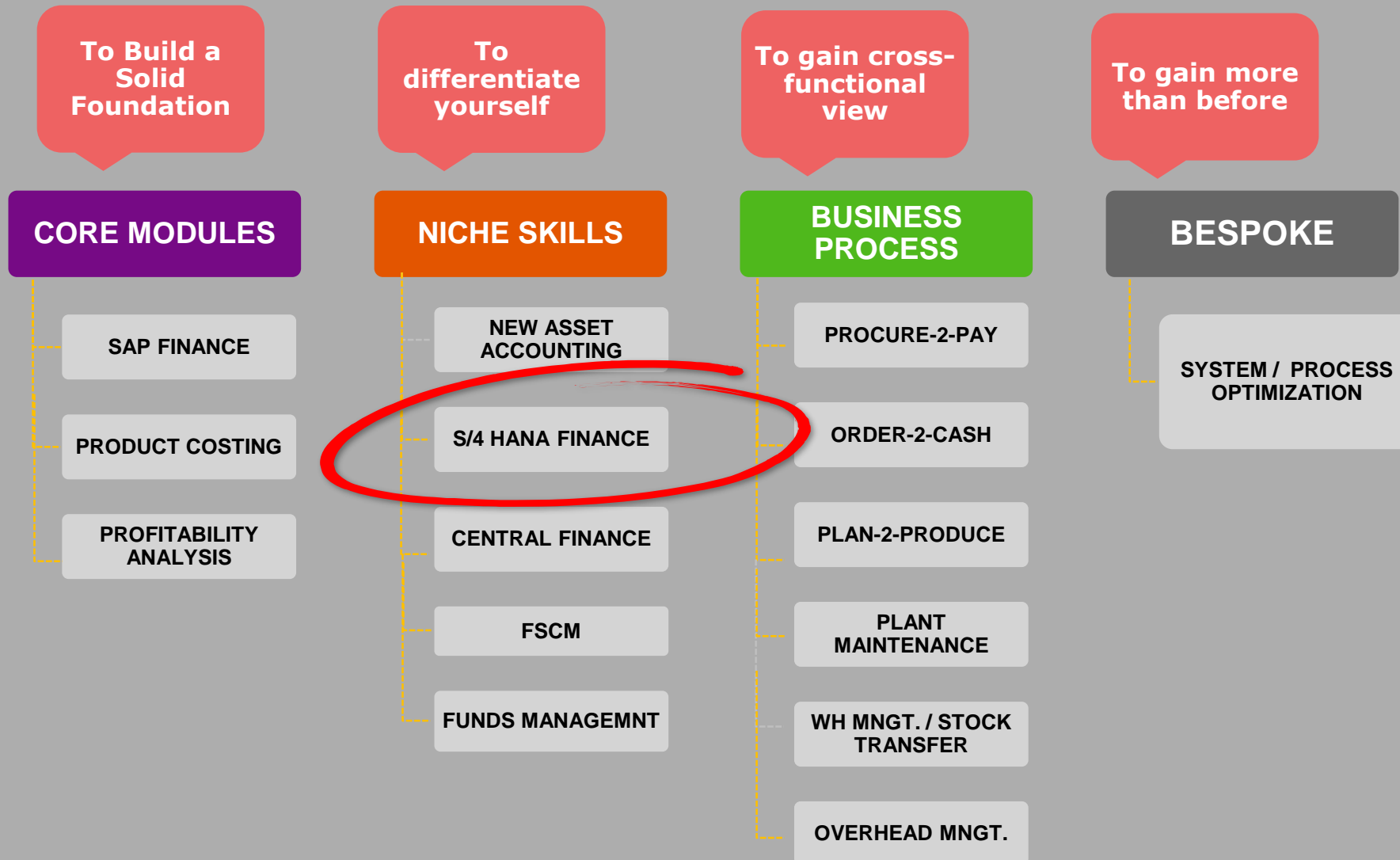
SAP Education Services



Staffing Services



Our SAP Education Offerings





Training methodology

- A perfect blend of SAP courses (E.g. S4F01, S4F02, S4F03) and trainer's rich expertise
- Each topic is covered the following way:
 - ❖ WHY it is relevant to the business?
 - ❖ HOW it is to be enabled? [the configuration]
 - ❖ WHAT master data does it need to execute the process?
 - ❖ HOW to execute the process?
 - ❖ WHEN to execute the process? [daily, period end, yearly, etc.]
 - ❖ WHAT questions to be asked during requirement gathering?
 - ❖ WHERE the data is stored and how to retrieve? [The SAP Tables]
 - ❖ WHAT are the possible enhancement options? [User exit, BADI, BAPI, Function Modules, etc.]
 - ❖ WHAT reports are available for the process?



Session 1

Topic	Content
S/4 HANA overview	<ul style="list-style-type: none">▪ Modern-day business challenges▪ How HANA helps addressing those challenges▪ Evolution of S/4 HANA▪ What is S/4 HANA▪ What is S/4 HANA Finance▪ Core values of S/4 HANA



Session 2

Topic	Content
S/4 HANA Finance	<ul style="list-style-type: none">▪ Universal Journal▪ Convergence of GL account and Cost element▪ New data structures▪ Obsolete data structures▪ Improvements in COPA▪ Improvements in Period End Close, etc▪ Overview of New Cash Management solution and Integrated Business Planning



Session 3

Topic	Content
Key functionalities of S/4 HANA Finance	<ul style="list-style-type: none">▪ New Ledger concept▪ Account Based CO-PA in S/4 HANA▪ New Asset Accounting▪ Data Aging



Session 4

Topic	Content
Fiori – The New UI	<ul style="list-style-type: none">▪ Overview of Fiori UI▪ Key Fiori Apps in Finance▪ Key Fiori Apps in Logistics



Session 5

Topic	Content
S/4 HANA -Deployment	<ul style="list-style-type: none">▪ Central Finance▪ Choices of deployment – On Premise / Cloud▪ Is New GL mandatory?▪ Various restrictions, limitations▪ CVI – Customer Vendor Integration▪ S4 HANA Finance migration▪ Custom Code Adaptation



Thank you

Grazie

Tack

Merci

谢谢

Dhanya-waadh

Obrigado

