



**AJITA SAP**  
CONSULTING PVT.LTD.

**EDUCATION | CONSULTING | ADVISORY SERVICES**

**Visit our website to know more:**

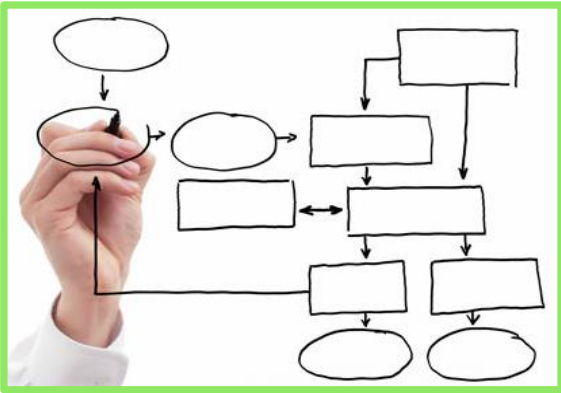
**[WWW.AJITASAPCONSULTING.COM](http://WWW.AJITASAPCONSULTING.COM)**

**Contact us:**

**[info@ajitasapconsulting.com](mailto:info@ajitasapconsulting.com)**



Who are we?



**Process Experts**



**Passionate for Technology**



**Love to share knowledge**

What we do?



**Niche Consulting & Value Added Services**



**Business Processes Optimization**



**SAP Education Services**



**Placement Services**

# Our Customer Reach..



**Toyota Kirloskar**

**Tech  
Mahindra**



**Binani**  
BRAJ BINANI GROUP



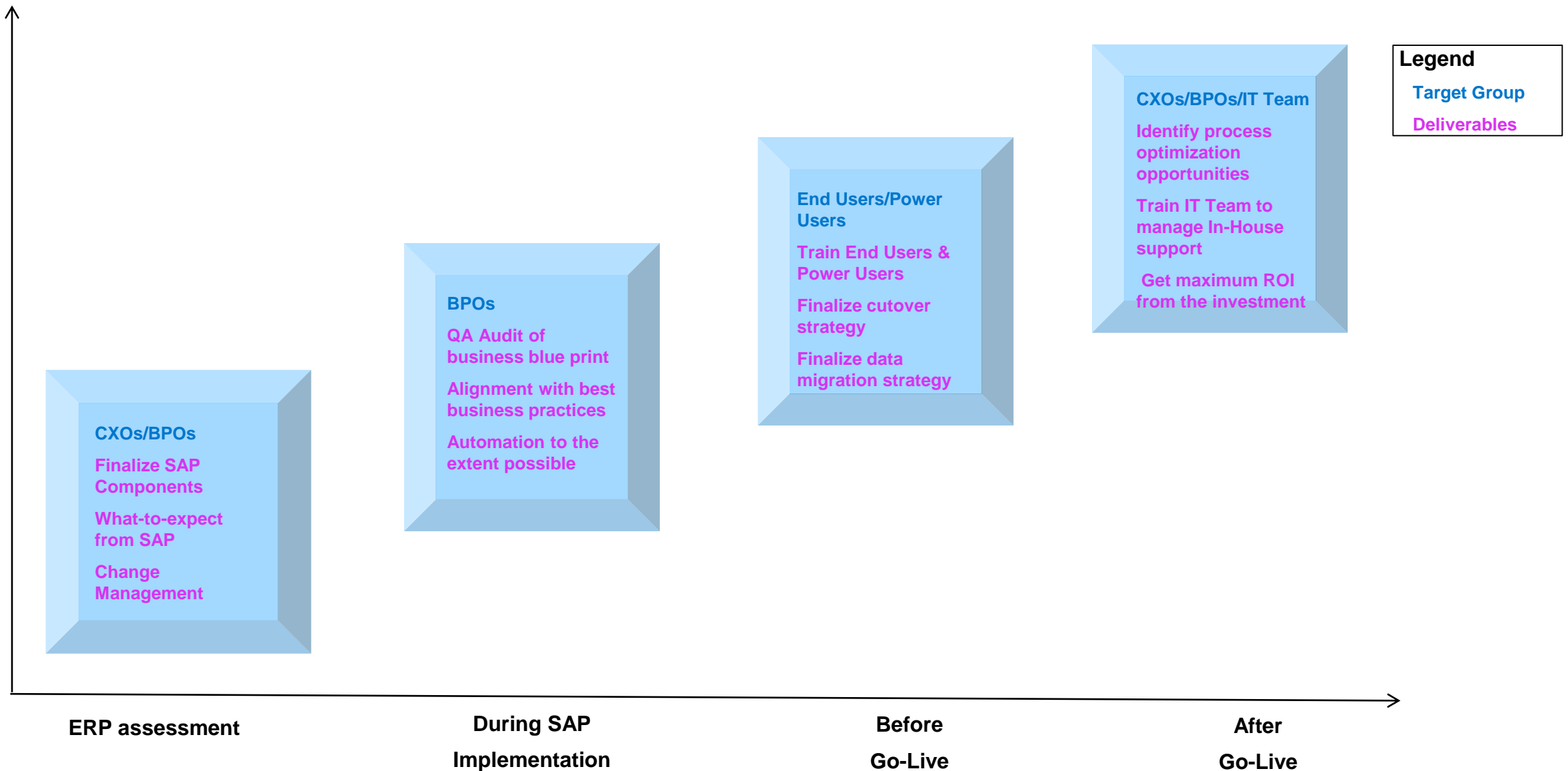


## Various professional blogs and white papers by us

Sr. No	Blog / White Paper	Category
01	<u><a href="#">Profit Center derivation in various scenarios</a></u>	SAP – Functional
02	<u><a href="#">Decoding the cost-object mapping framework in SAP Central Finance</a></u>	SAP - Functional
03	<u><a href="#">Demystifying the Ledger Currency Setup and Currency Conversion in SAP S/4 HANA Finance</a></u>	SAP – Functional
04	<u><a href="#">How to Set Up Parallel Asset Accounting in SAP S/4HANA Finance with Differing Fiscal Year Variants</a></u>	SAP – Functional
05	<u><a href="#">A holistic approach to implementing Central Finance</a></u>	SAP - Functional

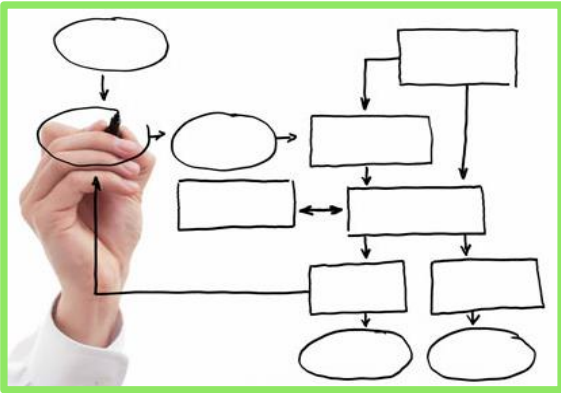


# We collaborate with customers throughout their SAP Journey





Who are we?



**Process Experts**



**Passionate for Technology**



**Love to share knowledge**

What we do?



**Niche Consulting & Value Added Services**



**Business Processes Optimization**

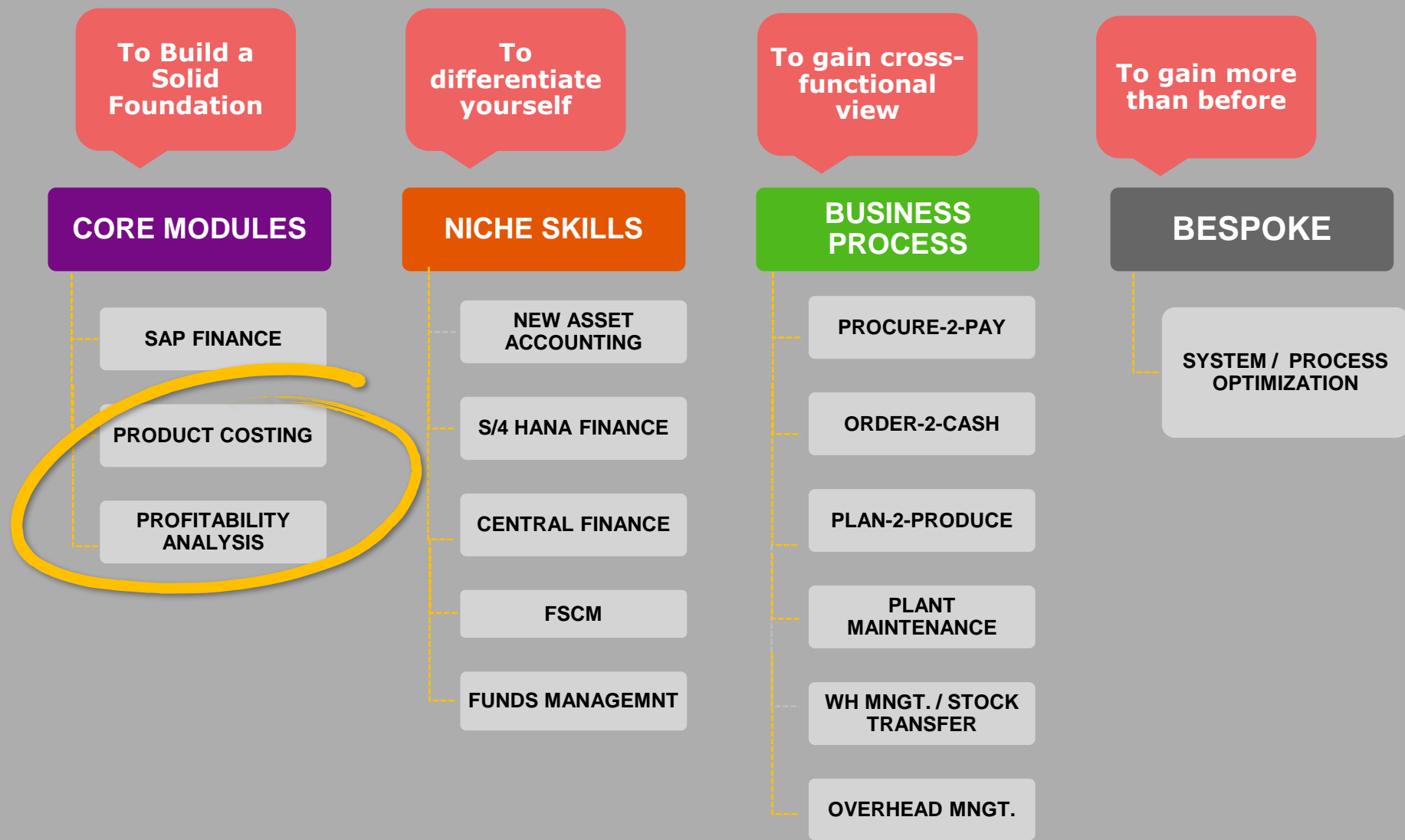


**SAP Education Services**



**Placement Services**

# Our SAP Education Offerings





# Training methodology

- A perfect blend of SAP courses (E.g. AC605, AC510, AC515, AC520 and TFIN22) and trainer's rich expertise
- Each topic is covered the following way:
  - WHY it is relevant to the business?
  - HOW it is to be enabled? [the configuration]
  - WHAT master data does it need to execute the process?
  - HOW to execute the process?
  - WHEN to execute the process? [daily, period end, yearly, etc.]
  - WHAT questions to be asked during requirement gathering?
  - WHERE the data is stored and how to retrieve? [The SAP Tables]
  - WHAT are the possible enhancement options? [User exit, BADI, BAPI, Function Modules, etc. ]
  - WHAT reports are available for the process?





## S/4 HANA Overview

Topic	Content
S/4 HANA Introduction	<ul style="list-style-type: none"><li>■ Modern-day business challenges</li><li>■ How HANA helps addressing those challenges</li><li>■ Evolution of S/4 HANA</li><li>■ What is S/4 HANA</li><li>■ What is S/4 HANA Finance</li><li>■ Core values of S/4 HANA</li></ul>



## CO-OM [Controlling – Overhead Management]

Topic	Content
Controlling overview, Basic settings and Cost center Accounting	<ul style="list-style-type: none"><li>▪ High level overview of controlling module</li><li>▪ SAP Enterprise Structure</li><li>▪ Universal Journal in S/4 HANA</li><li>▪ Setting up Controlling area, Company Code and Currency settings in Ledger</li><li>▪ Master data</li><li>▪ Cost center planning</li><li>▪ Making user defined planning layouts and planner profiles</li><li>▪ Actual postings</li><li>▪ Period end closing (Event Based postings, Assessment &amp; Distribution cycles, etc.)</li><li>▪ Reporting</li></ul>



## COPA [Controlling – Profitability Analysis]

Topic	Content
COPA (Account-based COPA as recommended by SAP in S/4 HANA)	<ul style="list-style-type: none"><li>■ Profitability Analysis overview</li><li>■ Master Data, Derivation rules and related Expert Tips</li><li>■ Actual value flows in COPA (From SD, FI, CO, PP, MM) and related Expert Tips</li><li>■ Information system – Creating COPA reports using report painter</li><li>■ Useful COPA User exits &amp; Enhancement options</li><li>■ Top-Down distribution, Realignment, Useful BAPIs, etc</li></ul>



## PCC [Product Cost Controlling]

Topic	Content
PCP – Product Cost Planning	<ul style="list-style-type: none"><li>■ Overview of Product Costing</li><li>■ Understanding the master data [Material Master, BOM, Routing]</li><li>■ Setting up Product Costing – Costing Variant, Cost Component Structure, Costing sheets</li><li>■ Calculation of plan activity prices</li><li>■ Calculating Product Cost Estimates</li><li>■ Impact of scrap on product cost estimates</li><li>■ Scenario based product cost estimates<ul style="list-style-type: none"><li>- Subcontracting</li><li>- Stock transfer</li><li>- Additive cost estimate</li><li>- Mixed cost estimates</li><li>- Scrap / By Product costing</li></ul></li><li>■ Calculating cost estimates <i>en masse</i></li><li>■ Reorganization (deletion) of cost estimates</li></ul>



## PCC [Product Cost Controlling]

Topic	Content
COC – Cost Object Controlling	<ul style="list-style-type: none"><li>■ Product cost by order (Discrete)</li><li>■ Product cost by period (Repetitive)</li><li>■ Product cost by sales order (at Basic Level)</li><li>■ Period end processes:<ul style="list-style-type: none"><li>- Actual activity price calculation</li><li>- Revaluation of production orders</li><li>- Overhead calculation</li><li>- Calculation of WIP</li><li>- Calculation of Variances</li><li>- Settlement</li><li>- Analysis of the period through reports</li></ul></li></ul>



## Other details

- All sessions are online
- Course Duration: 60-70 hours
- Corporate Training available on request



Thank you Thank you  
Grazie Grazie  
Tack Tack  
Merci Merci  
谢谢 谢谢  
Dhanya-waadh Dhanya-waadh  
Obrigado Obrigado

