



**EDUCATION | CONSULTING | ADVISORY SERVICES**

**Visit our website to know more:**

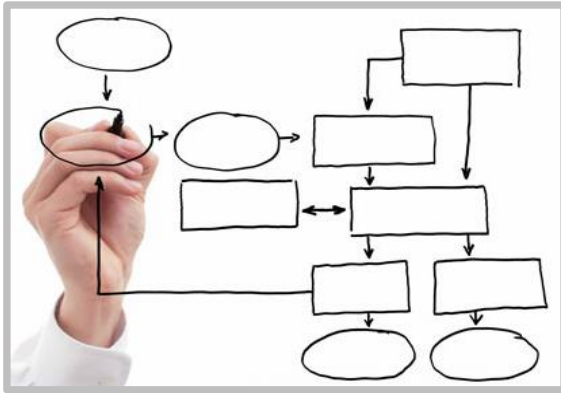
**[WWW.AJITASAPCONSULTING.COM](http://WWW.AJITASAPCONSULTING.COM)**

**Contact us:**

**[info@ajitasapconsulting.com](mailto:info@ajitasapconsulting.com)**



Who are we?



**Process Experts**



**Passionate for Technology**



**Love to share knowledge**

What we do?



**Niche Consulting & Value Added Services**



**Targeted Consulting**



**SAP Education Services**



**Staffing Services**



# Our Customer Reach..



**Toyota Kirloskar**

**Tech  
Mahindra**



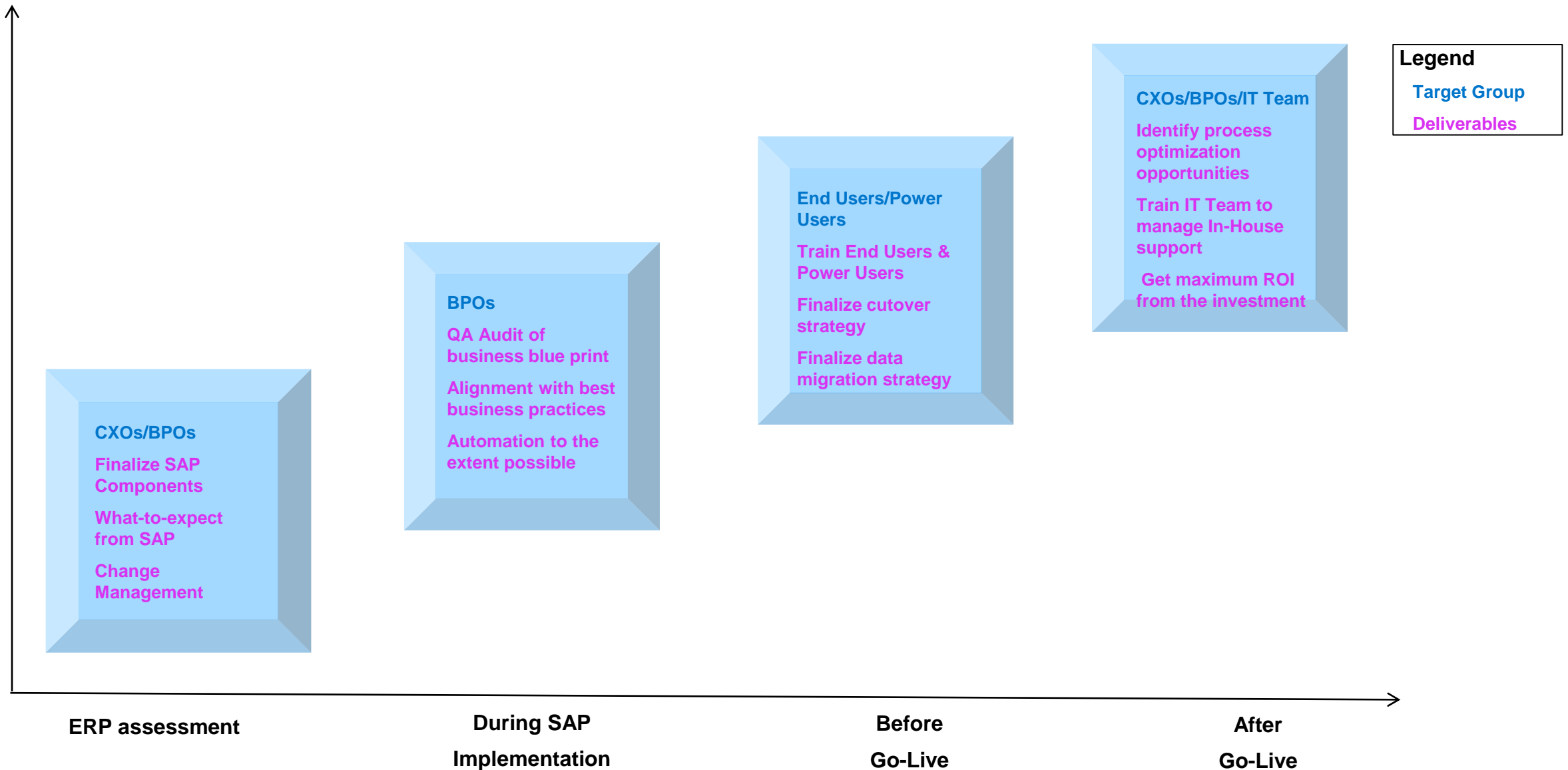


# Various professional blogs and white papers by us

Sr. No	Blog / White Paper	Category
01	<u><a href="#">Profit Center derivation in various scenarios</a></u>	SAP – Functional
02	<u><a href="#">Decoding the cost-object mapping framework in SAP Central Finance</a></u>	SAP - Functional
03	<u><a href="#">Demystifying the Ledger Currency Setup and Currency Conversion in SAP S/4 HANA Finance</a></u>	SAP – Functional
04	<u><a href="#">How to Set Up Parallel Asset Accounting in SAP S/4HANA Finance with Differing Fiscal Year Variants</a></u>	SAP – Functional
05	<u><a href="#">A holistic approach to implementing Central Finance</a></u>	SAP - Functional

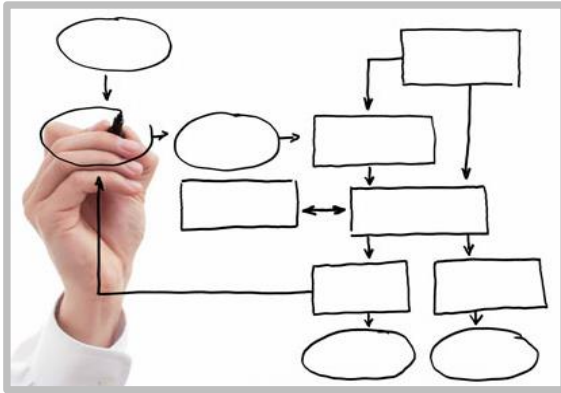


# We collaborate with customers throughout their SAP Journey





Who are we?



**Process Experts**



**Passionate for Technology**



**Love to share knowledge**

What we do?



**Niche Consulting & Value Added Services**



**Targeted Consulting**



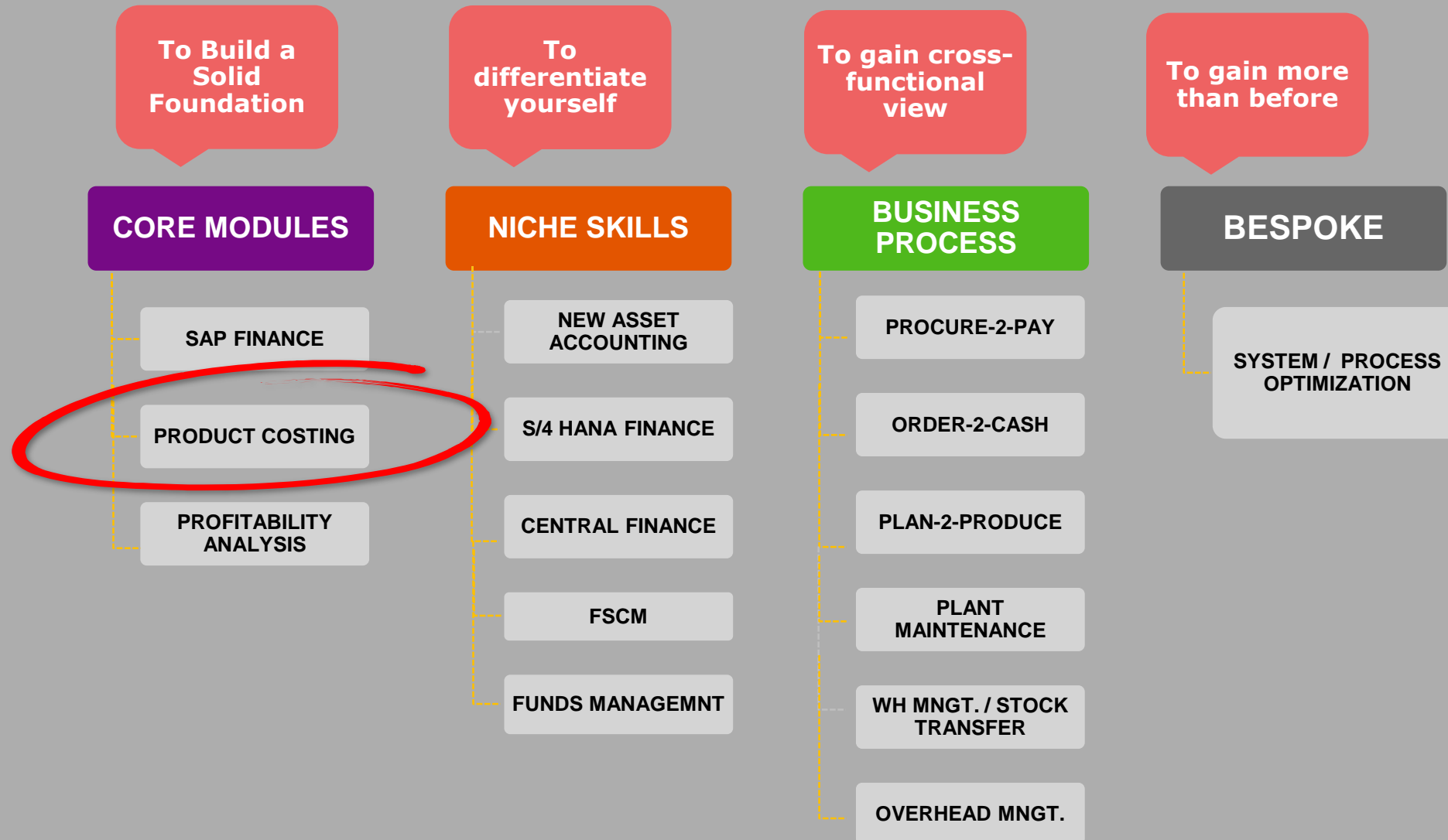
**SAP Education Services**



**Staffing Services**



# Our SAP Education Offerings





# Training methodology

- A perfect blend of SAP courses and trainer's rich expertise
- Each topic is covered the following way:
  - ❖ WHY it is relevant to the business?
  - ❖ HOW it is to be enabled? [the configuration]
  - ❖ WHAT master data does it need to execute the process?
  - ❖ HOW to execute the process?
  - ❖ WHEN to execute the process? [daily, period end, yearly, etc.]
  - ❖ WHAT questions to be asked during requirement gathering?
  - ❖ WHERE the data is stored and how to retrieve? [The SAP Tables]
  - ❖ WHAT are the possible enhancement options? [User exit, BADI, BAPI, Function Modules, etc. ]
  - ❖ WHAT reports are available for the process?





## COPC [Controlling – Product Costing]

Topic	Content
Product Costing Overview	<ul style="list-style-type: none"><li>▪ Overview of Product Costing</li><li>▪ Components of Product Cost Controlling in SAP</li><li>▪ Overview of Product Cost Planning</li><li>▪ Overview of Cost Object Controlling</li></ul>



## COPC [Controlling – Product Costing]

Topic	Content
Product Cost Planning	<ul style="list-style-type: none"><li data-bbox="988 378 2119 472">▪ Understanding the master data [Material Master, BOM, Routing]</li><li data-bbox="988 504 2119 598">▪ Setting up Product Costing – Costing Variant, Cost Component Structure</li><li data-bbox="988 629 1740 675">▪ Calculation of plan activity prices</li><li data-bbox="988 706 2010 752">▪ Calculation of overheads using costing sheets</li><li data-bbox="988 783 1778 829">▪ Calculating Product Cost Estimates</li></ul>



## COPC [Controlling – Product Costing]

Topic	Content
Product Cost Estimate in various scenarios	<ul style="list-style-type: none"><li>▪ Subcontracting</li><li>▪ Stock transfer</li><li>▪ Additive cost estimate</li><li>▪ Mixed cost estimates</li><li>▪ Scrap / By Product costing</li><li>▪ Calculating cost estimates en masse</li><li>▪ Reorganization (deletion) of cost estimates</li></ul>



## COPC [Controlling – Product Costing]

Topic	Content
Process Walkthrough of Cost Object Controlling	<ul style="list-style-type: none"><li data-bbox="988 378 1905 472">▪ Overview of Cost Object Controlling with accounting touch points</li><li data-bbox="988 504 2058 551">▪ Various scenarios in manufacturing (MTS, MTO)</li><li data-bbox="988 582 1967 676">▪ Various manufacturing strategies (Discrete, Continuous, Process)</li><li data-bbox="988 708 1865 755">▪ Components of Cost Object Controlling</li></ul>



## COPC [Controlling – Product Costing]

Topic	Content
Cost Object Controlling	<ul style="list-style-type: none"><li>▪ Product cost by order (Discrete)</li><li>▪ Product cost by period (Repetitive)</li><li>▪ Product cost by sales order (Make To Order)</li><li>▪ Period end processes (Actual activity price,</li><li>▪ Revaluation, Overhead calculation, WIP, Variance,</li><li>▪ Settlement)</li></ul>

Product cost by order & period will be covered in detail. Product cost by sales order will be covered at Basic Level



## Other details

- All sessions are online
- Course Duration: 25-30 hours
- Corporate Training available on request



Thank you Thank you  
Grazie Grazie  
Tack Tack  
Merci Merci  
谢谢 谢谢  
Dhanya-waadh Dhanya-waadh  
Obrigado Obrigado

