



EDUCATION | CONSULTING | ADVISORY SERVICES

Visit our website to know more:

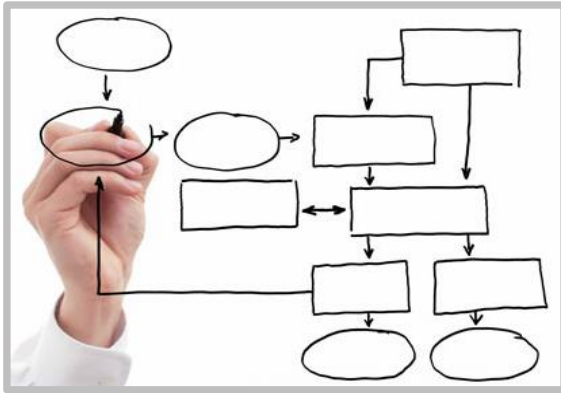
WWW.AJITASAPCONSULTING.COM

Contact us:

info@ajitasapconsulting.com



Who are we?



Process Experts



Passionate for Technology



Love to share knowledge

What we do?



Niche Consulting & Value Added Services



Targeted Consulting



SAP Education Services



Staffing Services



Our Customer Reach..



Toyota Kirloskar

**Tech
Mahindra**



Binani
BRAJ BINANI GROUP



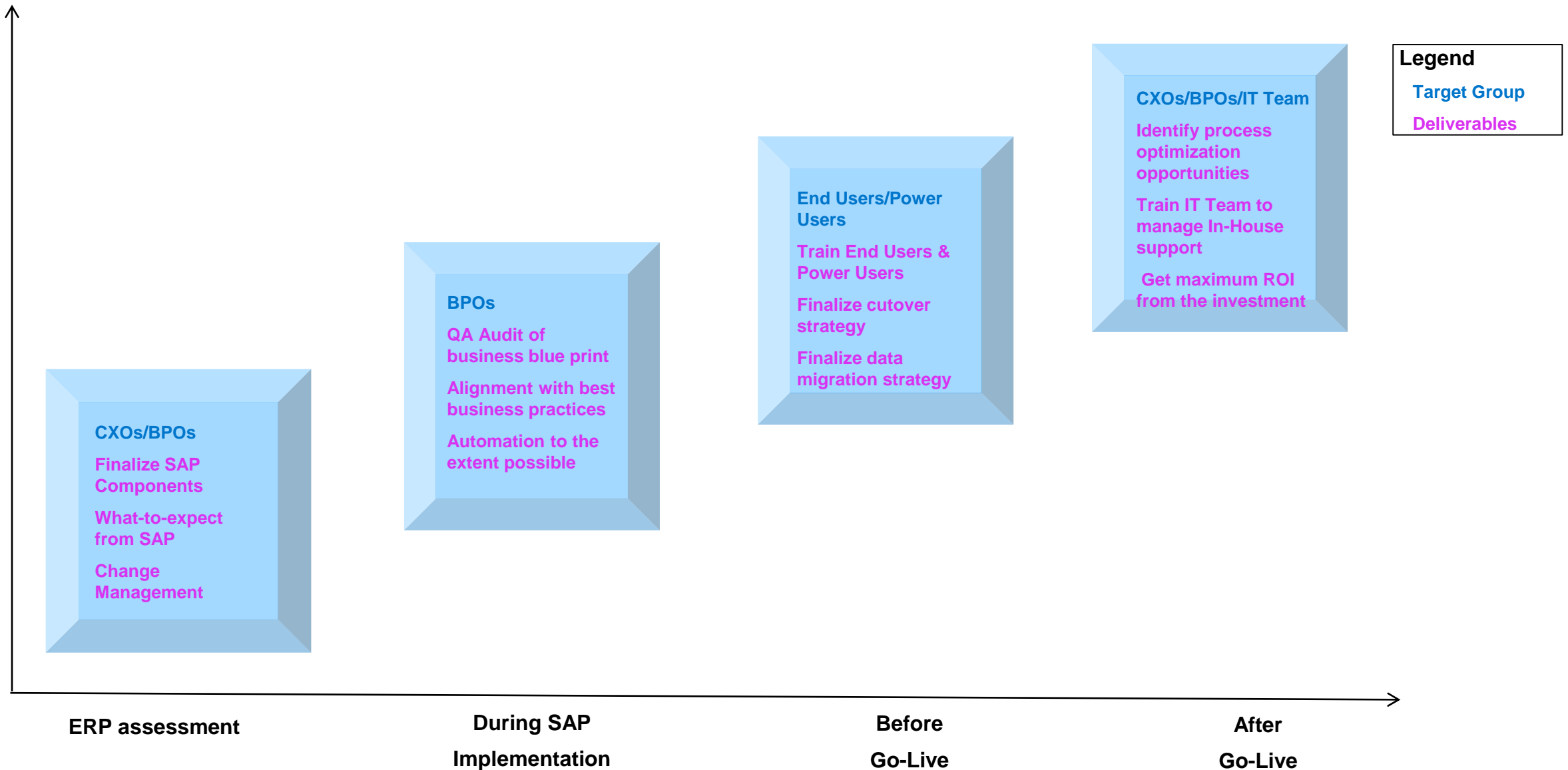


Various professional blogs and white papers by us

Sr. No	Blog / White Paper	Category
01	<u>Profit Center derivation in various scenarios</u>	SAP – Functional
02	<u>Decoding the cost-object mapping framework in SAP Central Finance</u>	SAP - Functional
03	<u>Demystifying the Ledger Currency Setup and Currency Conversion in SAP S/4 HANA Finance</u>	SAP – Functional
04	<u>How to Set Up Parallel Asset Accounting in SAP S/4HANA Finance with Differing Fiscal Year Variants</u>	SAP – Functional
05	<u>A holistic approach to implementing Central Finance</u>	SAP - Functional

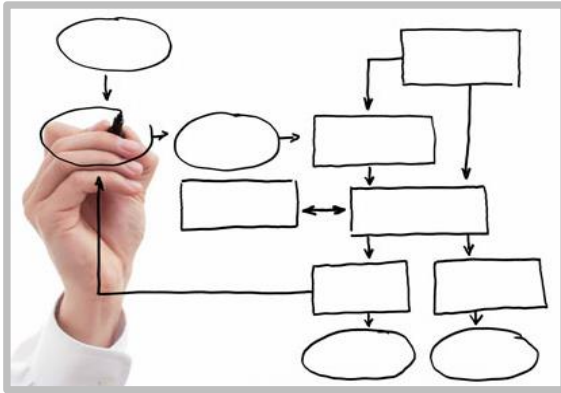


We collaborate with customers throughout their SAP Journey





Who are we?



Process Experts



Passionate for Technology

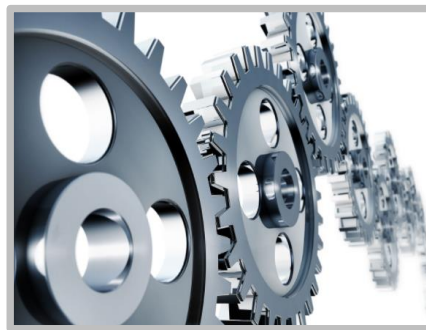


Love to share knowledge

What we do?



Niche Consulting & Value Added Services



Targeted Consulting



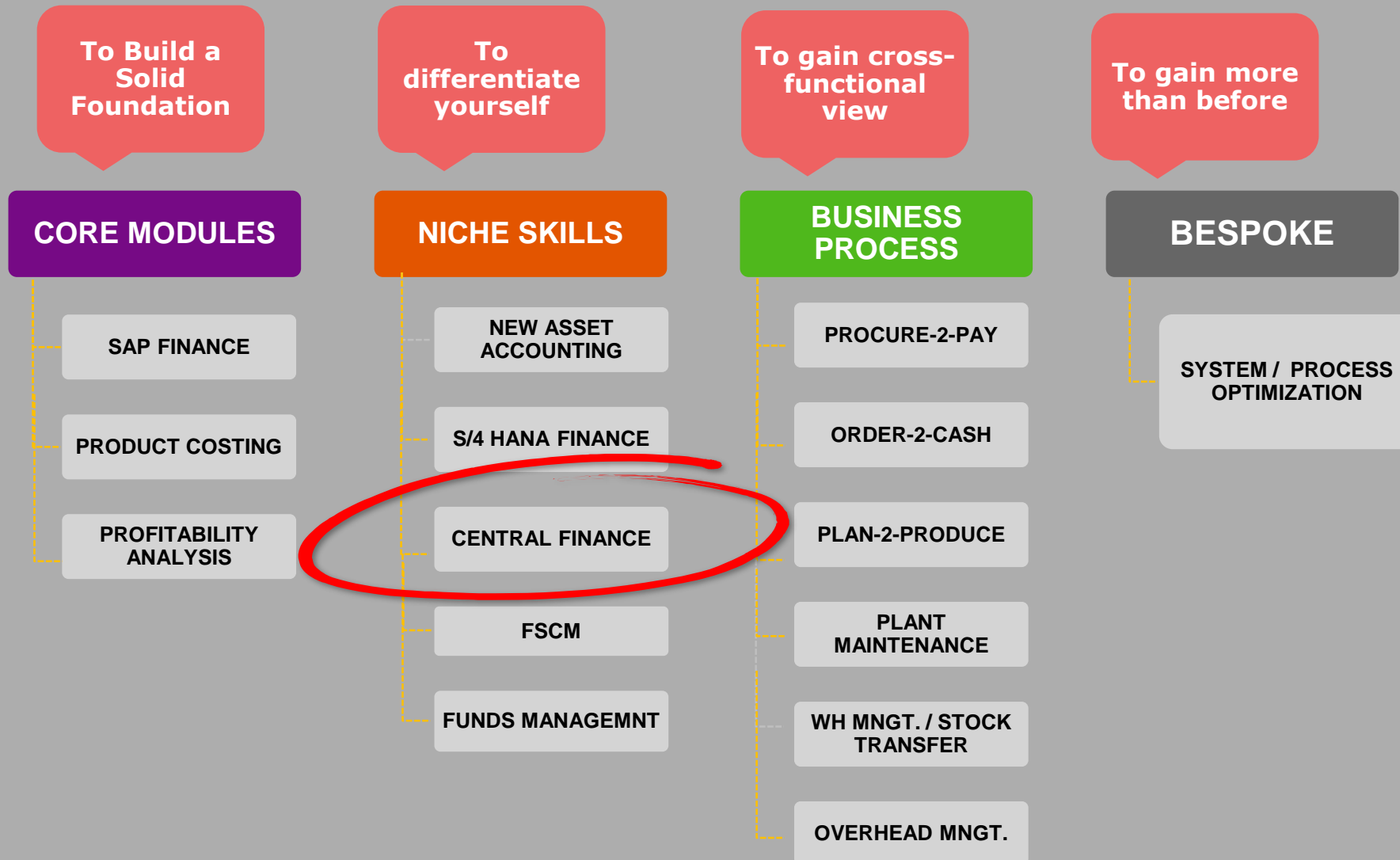
SAP Education Services



Staffing Services



Our SAP Education Offerings





Training methodology

- A perfect blend of SAP courses (S4F04) and trainer's rich expertise
- Each topic is covered the following way:
 - ❖ WHY it is relevant to the business?
 - ❖ HOW it is to be enabled? [the configuration]
 - ❖ WHAT master data does it need to execute the process?
 - ❖ HOW to execute the process?
 - ❖ WHEN to execute the process? [daily, period end, yearly, etc.]
 - ❖ WHAT questions to be asked during requirement gathering?
 - ❖ WHERE the data is stored and how to retrieve? [The SAP Tables]
 - ❖ WHAT are the possible enhancement options? [User exit, BADI, BAPI, Function Modules, etc.]
 - ❖ WHAT reports are available for the process?



Chapter 1

Topic	Content
Central Finance overview	<ul style="list-style-type: none"><li data-bbox="988 379 1658 418">▪ Overview of Central Finance<li data-bbox="988 454 1905 596">▪ Central Finance as a deployment option compared to other modes of S/4 HANA deployment<li data-bbox="988 632 1778 671">▪ Central Finance Business Benefits



Chapter 2

Topic	Content
Central Finance Architecture	<ul style="list-style-type: none">▪ Overview of Central Finance Architecture▪ Various source system/s and related prerequisites▪ SLT Replication Server▪ MDG Functions in Central Finance▪ Application Interface Framework for Error Monitoring



Chapter 3

Topic	Content
Data Flow in Central Finance	<ul style="list-style-type: none">▪ Central Finance Interfaces▪ MDG Mapping – Key and Value Mapping▪ Cost Object mapping Replication▪ Real-time Replication▪ Drill-back to the source system



Chapter 4

Topic	Content
Blueprint of Central Finance scenarios	<ul style="list-style-type: none">▪ Systems in scope▪ Reporting and analytics▪ Data harmonization▪ Processes to be centralized▪ Master data mapping scenarios▪ Document splitting▪ COPA switchover (CBCOPA to CBCOPA, CBCOPA to ABCOPA, CBCOPA to CBCOPA+ABCOPA)



Chapter 5

Topic	Content
System set up	<ul style="list-style-type: none">▪ Source system set up▪ SLT set up▪ Target system set up<ul style="list-style-type: none">❖ Technical Configuration of CFIN target system❖ Cost Object mapping Rules❖ MDG (Key and Value mapping)❖ Knowledge of Central Finance BADI's▪ Smoke test



Chapter 6

Topic	Content
Master Data Replication	<ul style="list-style-type: none"><li data-bbox="988 382 1505 425">▪ Replication strategies<li data-bbox="988 458 1714 501">▪ Master data replication process<li data-bbox="988 534 1620 576">▪ S/4HANA Business Partner



Chapter 7

Topic	Content
Initial Load	<ul style="list-style-type: none">▪ Initial Load of Cost Objects▪ Initial Load of FI/CO postings▪ Initial Load of CO internal postings▪ Validation and Reconciliation in Central Finance▪ Error handling at the time of initial load▪ Resetting Initial Load



Chapter 8

Topic	Content
Real-time replication	<ul style="list-style-type: none">▪ Prerequisite to activate real time replication▪ Start real time replication▪ Handle errors of real time replication



Chapter 9

Topic	Content
Central Process Execution	<ul style="list-style-type: none">▪ Credit Management▪ Dispute Management▪ Collection Management▪ Central Payments▪ Inter-company reconciliation▪ AR/AP reporting▪ Integrated Planning



Chapter 10

Topic	Content
Cutover & Change management	<ul style="list-style-type: none">▪ Period end close▪ Year end close▪ Reporting snapshots for data reconciliation▪ Initial load of cost objects▪ Initial load of FI/CO postings▪ Key change management areas



Other details

- Course Duration: ~20 hours
- This is an instructor-led training session, with system demonstration wherever possible
- Some processes will be demonstrated over the presentation



Thank you Thank you Grazie Tack Merci
谢谢 Dhanya-waadh Obrigado
谢谢 Dhanya-waadh Obrigado

